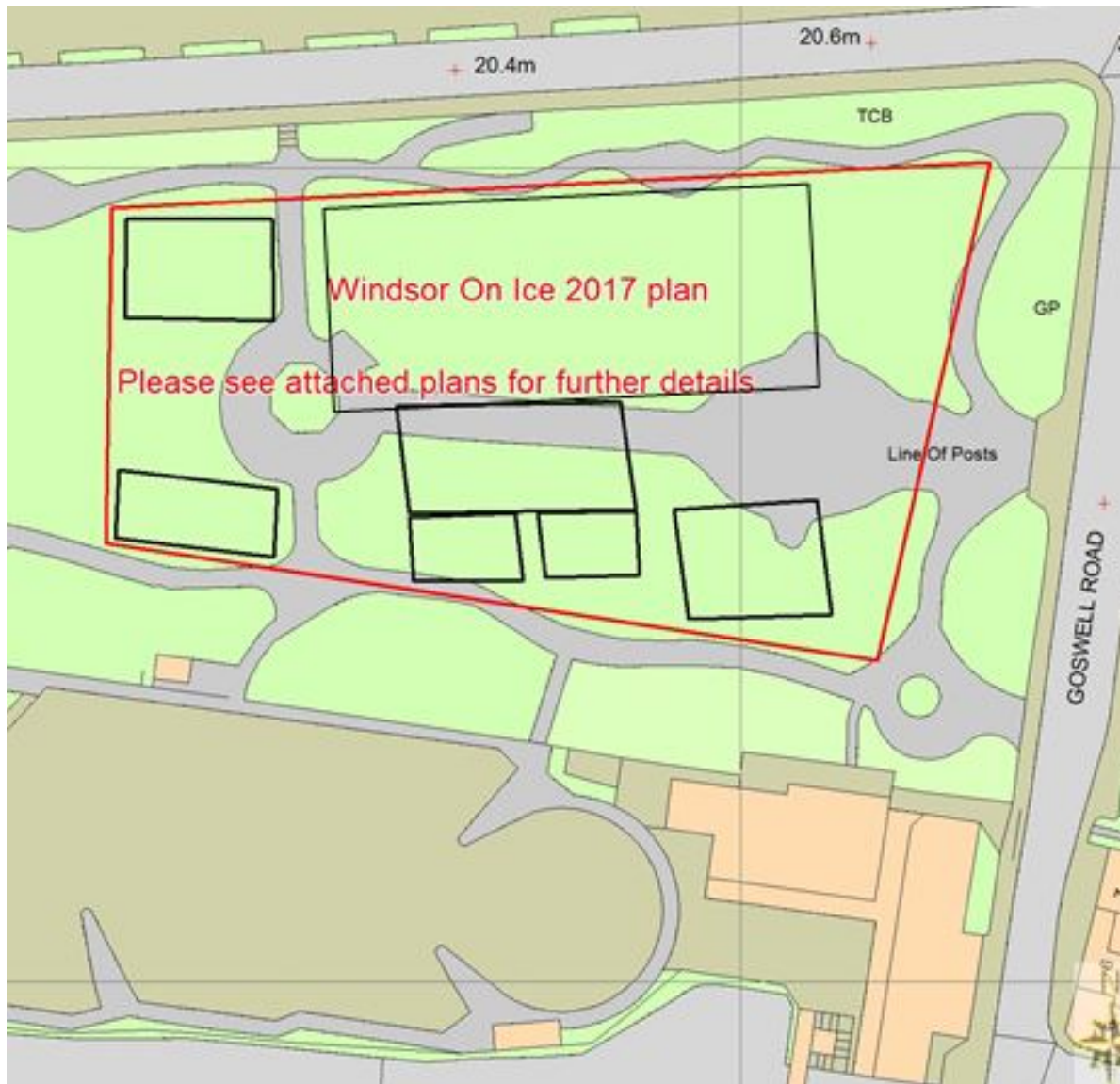
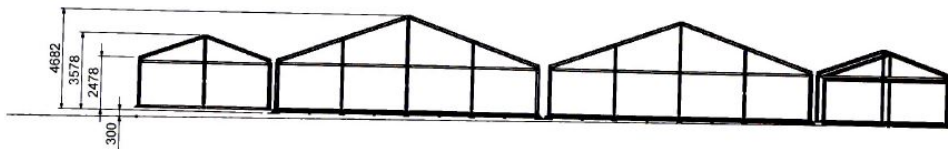


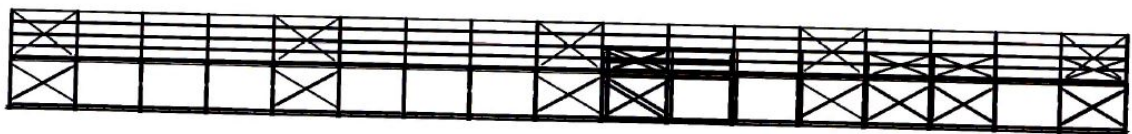
Appendix A: Location and Site Plan



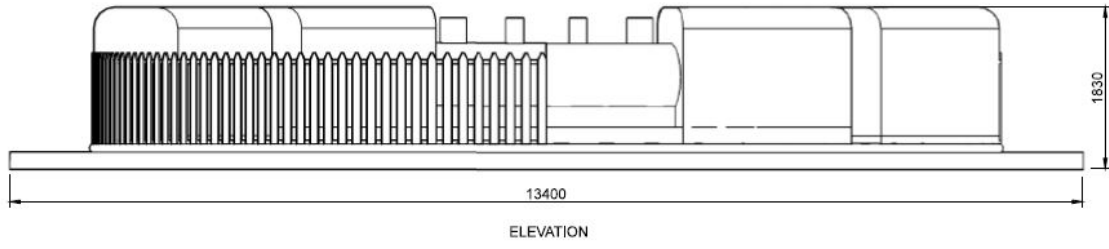
Appendix B: Plans and Elevations



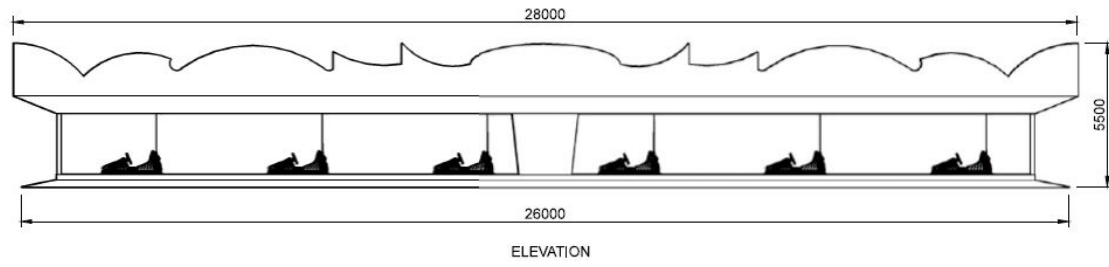
VIEW B



VIEW A



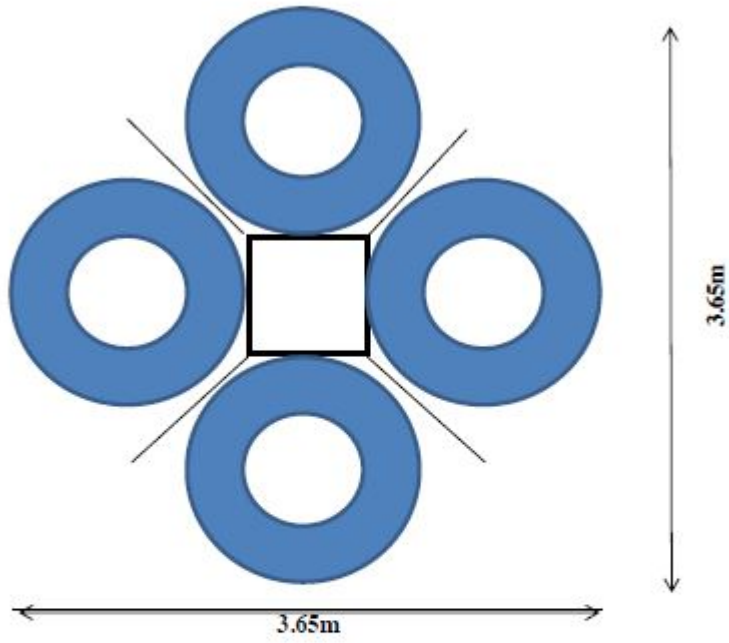
Drawing Title: TRAIN RIDE		Client: Perrin Coupland 15 The Quadrant, Aired Park Road, Leigh, Greater Manchester, M45 9JN, United Kingdom	
Project: FERRIN COUPLAND		Consultant: DMG technical	
Date: 15 AUGUST 2014	Revision: 1	DMG Technical Limited 10 Cavendish Road, Salford, Greater Manchester, M6 6PU, United Kingdom Tel: +44 (0)161 275 1111 Fax: +44 (0)161 275 1112 Email: dm@dmtechnical.co.uk	
Scale: 1:50	Units: MM		

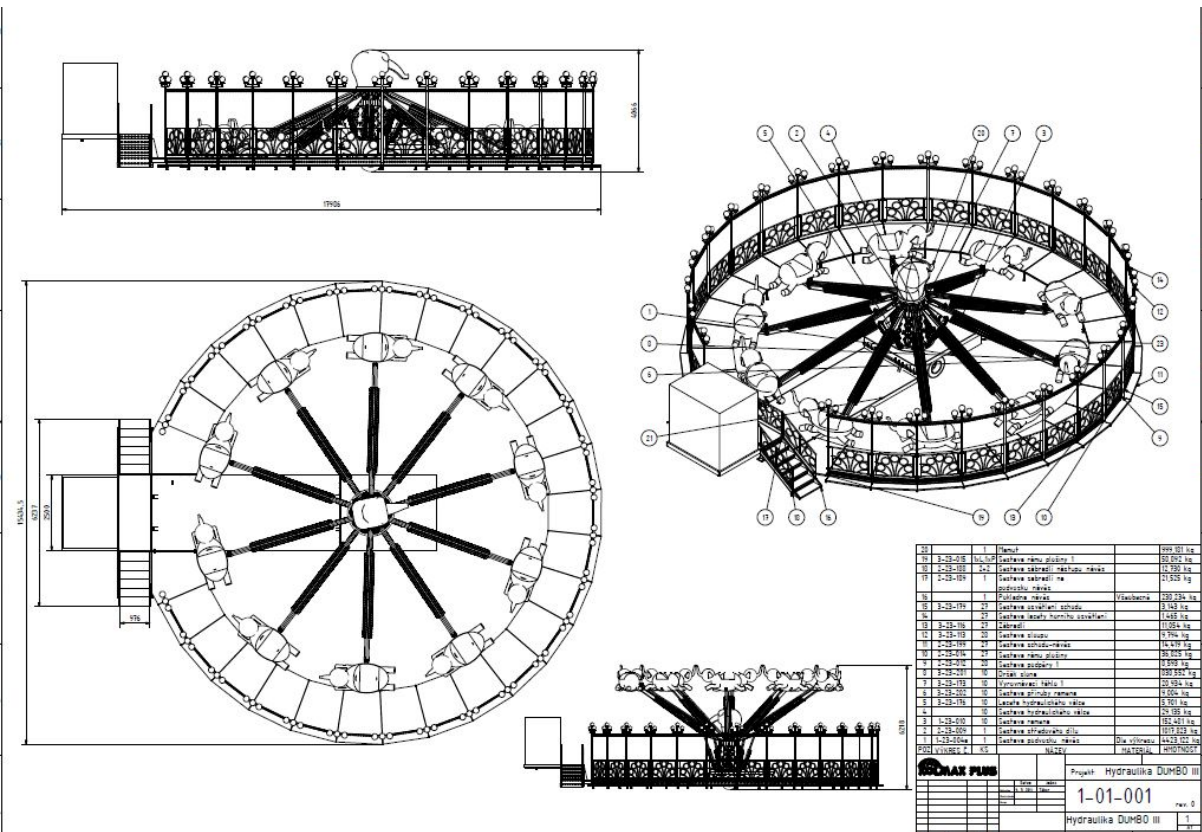
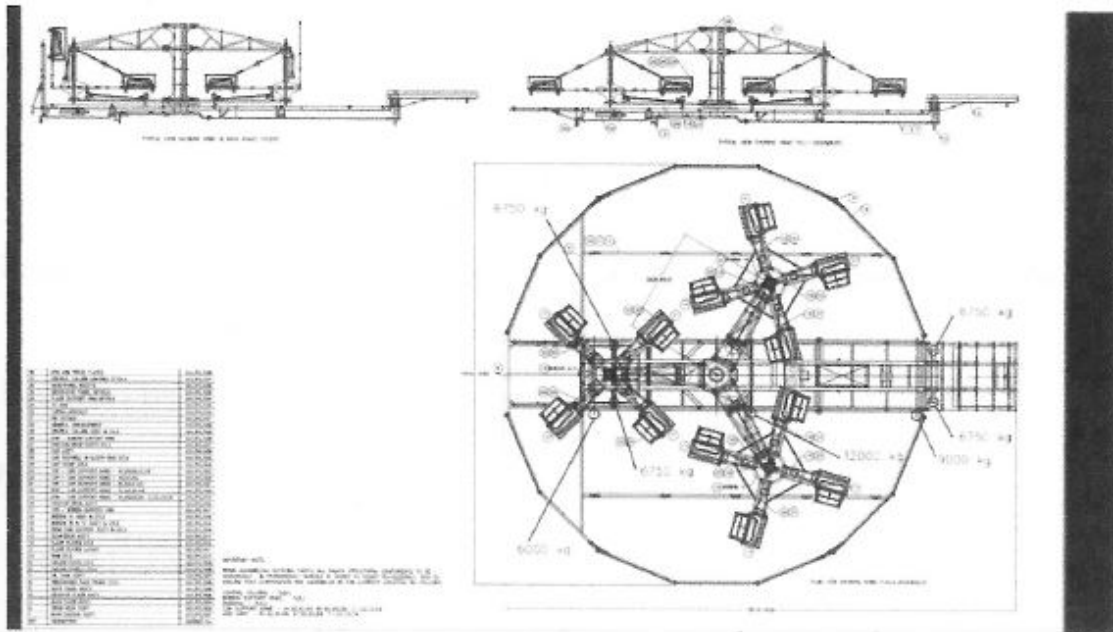


Drawing Title: ADESKO DODGEMS		Client: Perrin Coupland 15 The Quadrant, Aired Park Road, Leigh, Greater Manchester, M45 9JN, United Kingdom	
Project: FERRIN COUPLAND		Consultant: DMG technical	
Date: 15 AUGUST 2014	Revision: 1	DMG Technical Limited 10 Cavendish Road, Salford, Greater Manchester, M6 6PU, United Kingdom Tel: +44 (0)161 275 1111 Fax: +44 (0)161 275 1112 Email: dm@dmtechnical.co.uk	
Scale: 1:100	Units: MM		



Bungee Trampoline





No	Uraian	QTY	Uraian	QTY
10	1-15-016	1	1-15-016	1
11	1-15-017	2	1-15-017	2
12	1-15-018	1	1-15-018	1
13	1-15-019	1	1-15-019	1
14	1-15-020	1	1-15-020	1
15	1-15-021	1	1-15-021	1
16	1-15-022	1	1-15-022	1
17	1-15-023	1	1-15-023	1
18	1-15-024	1	1-15-024	1
19	1-15-025	1	1-15-025	1
20	1-15-026	1	1-15-026	1
21	1-15-027	1	1-15-027	1
22	1-15-028	1	1-15-028	1
23	1-15-029	1	1-15-029	1
24	1-15-030	1	1-15-030	1
25	1-15-031	1	1-15-031	1
26	1-15-032	1	1-15-032	1
27	1-15-033	1	1-15-033	1
28	1-15-034	1	1-15-034	1
29	1-15-035	1	1-15-035	1
30	1-15-036	1	1-15-036	1
31	1-15-037	1	1-15-037	1
32	1-15-038	1	1-15-038	1
33	1-15-039	1	1-15-039	1
34	1-15-040	1	1-15-040	1
35	1-15-041	1	1-15-041	1
36	1-15-042	1	1-15-042	1
37	1-15-043	1	1-15-043	1
38	1-15-044	1	1-15-044	1
39	1-15-045	1	1-15-045	1
40	1-15-046	1	1-15-046	1
41	1-15-047	1	1-15-047	1
42	1-15-048	1	1-15-048	1
43	1-15-049	1	1-15-049	1
44	1-15-050	1	1-15-050	1
45	1-15-051	1	1-15-051	1
46	1-15-052	1	1-15-052	1
47	1-15-053	1	1-15-053	1
48	1-15-054	1	1-15-054	1
49	1-15-055	1	1-15-055	1
50	1-15-056	1	1-15-056	1
51	1-15-057	1	1-15-057	1
52	1-15-058	1	1-15-058	1
53	1-15-059	1	1-15-059	1
54	1-15-060	1	1-15-060	1
55	1-15-061	1	1-15-061	1
56	1-15-062	1	1-15-062	1
57	1-15-063	1	1-15-063	1
58	1-15-064	1	1-15-064	1
59	1-15-065	1	1-15-065	1
60	1-15-066	1	1-15-066	1
61	1-15-067	1	1-15-067	1
62	1-15-068	1	1-15-068	1
63	1-15-069	1	1-15-069	1
64	1-15-070	1	1-15-070	1
65	1-15-071	1	1-15-071	1
66	1-15-072	1	1-15-072	1
67	1-15-073	1	1-15-073	1
68	1-15-074	1	1-15-074	1
69	1-15-075	1	1-15-075	1
70	1-15-076	1	1-15-076	1
71	1-15-077	1	1-15-077	1
72	1-15-078	1	1-15-078	1
73	1-15-079	1	1-15-079	1
74	1-15-080	1	1-15-080	1
75	1-15-081	1	1-15-081	1
76	1-15-082	1	1-15-082	1
77	1-15-083	1	1-15-083	1
78	1-15-084	1	1-15-084	1
79	1-15-085	1	1-15-085	1
80	1-15-086	1	1-15-086	1
81	1-15-087	1	1-15-087	1
82	1-15-088	1	1-15-088	1
83	1-15-089	1	1-15-089	1
84	1-15-090	1	1-15-090	1
85	1-15-091	1	1-15-091	1
86	1-15-092	1	1-15-092	1
87	1-15-093	1	1-15-093	1
88	1-15-094	1	1-15-094	1
89	1-15-095	1	1-15-095	1
90	1-15-096	1	1-15-096	1
91	1-15-097	1	1-15-097	1
92	1-15-098	1	1-15-098	1
93	1-15-099	1	1-15-099	1
94	1-15-100	1	1-15-100	1
95	1-15-101	1	1-15-101	1
96	1-15-102	1	1-15-102	1
97	1-15-103	1	1-15-103	1
98	1-15-104	1	1-15-104	1
99	1-15-105	1	1-15-105	1
100	1-15-106	1	1-15-106	1

Proyek: Hidraulika DUMBO III
 1-01-001
 Hidraulika DUMBO III

