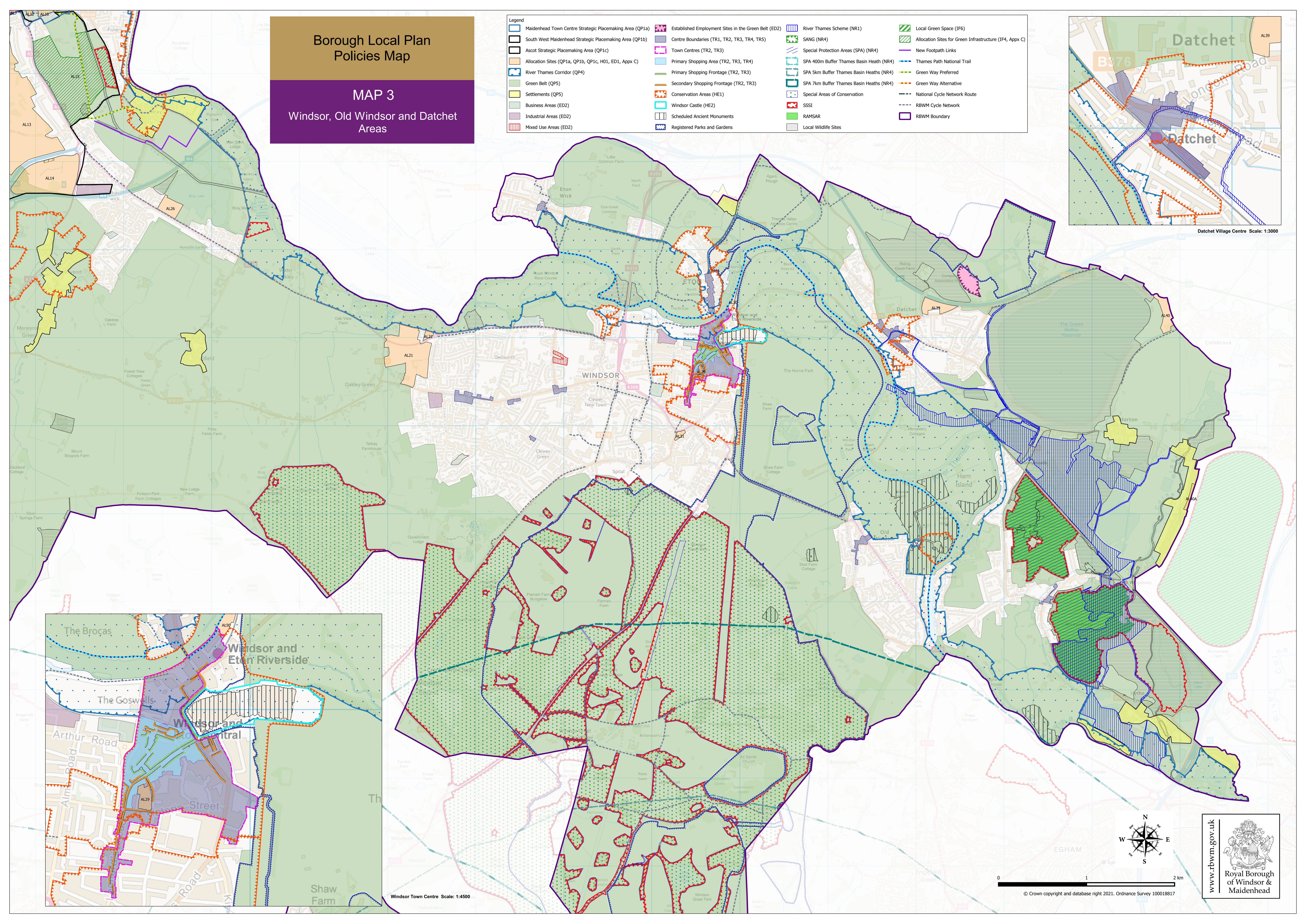
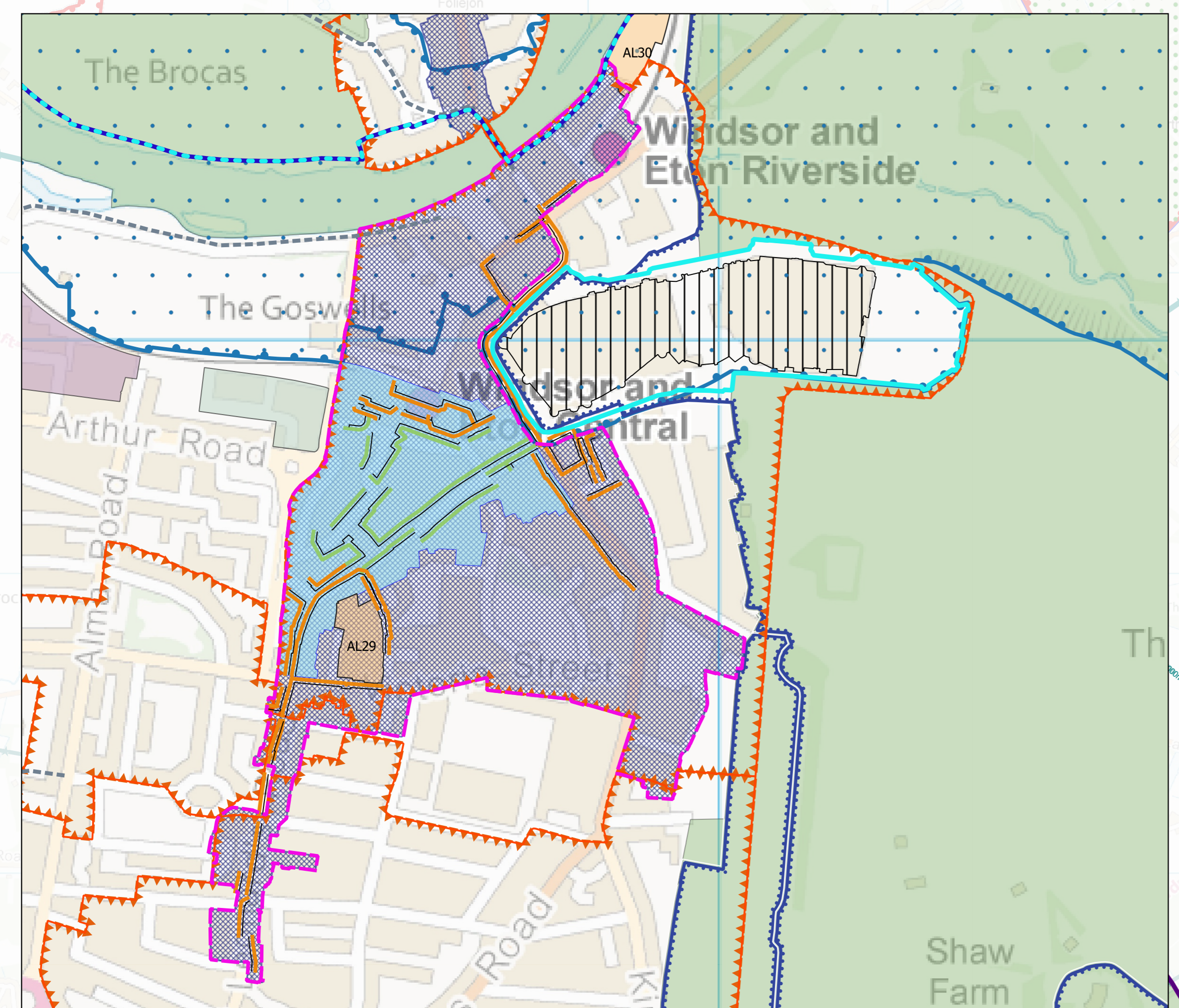
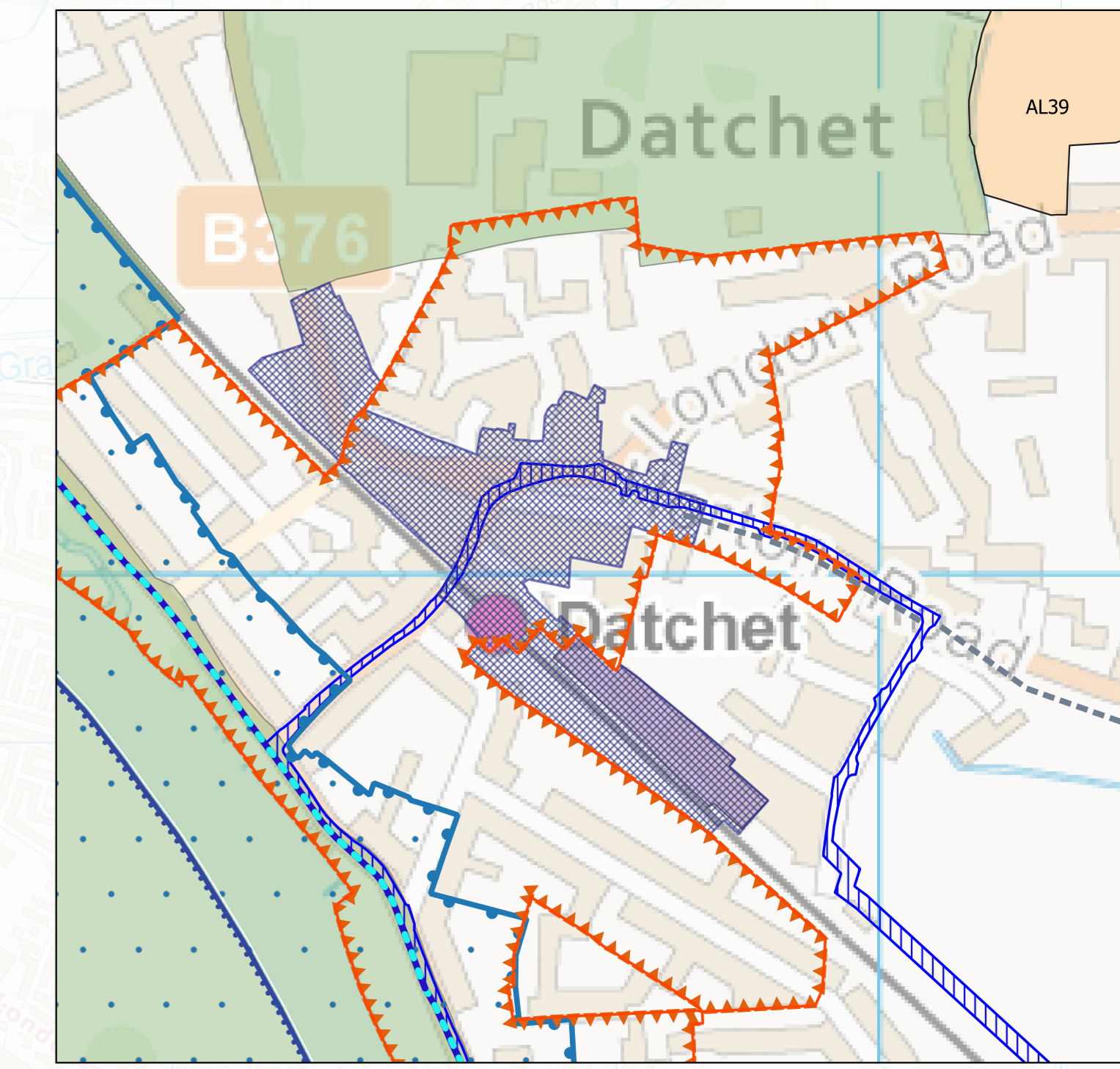


Borough Local Plan Policies Map

MAP 3

Windsor, Old Windsor and Datchet Areas

Legend		
Maidenhead Town Centre Strategic Placemaking Area (QP1a)	Established Employment Sites in the Green Belt (ED2)	River Thames Scheme (NR1)
South West Maidenhead Strategic Placemaking Area (QP1b)	Centre Boundaries (TR1, TR2, TR3, TR4, TR5)	SANG (NR4)
Ascot Strategic Placemaking Area (QP1c)	Town Centres (TR2, TR3)	Special Protection Areas (SPA) (NR4)
Allocation Sites (QP1a, QP1b, QP1c, H01, ED1, Appx C)	Primary Shopping Area (TR2, TR3, TR4)	SPA 400m Buffer Thames Basin Heaths (NR4)
River Thames Corridor (QP4)	Primary Shopping Frontage (TR2, TR3)	SPA 5km Buffer Thames Basin Heaths (NR4)
Green Belt (QP5)	Secondary Shopping Frontage (TR2, TR3)	Special Areas of Conservation
Settlements (QP5)	Conservation Areas (HE1)	SSSI
Business Areas (ED2)	Windsor Castle (HE2)	RAMSAR
Industrial Areas (ED2)	Scheduled Ancient Monuments	Local Wildlife Sites
Mixed Use Areas (ED2)	Registered Parks and Gardens	
		Local Green Space (IF6)
		Allocation Sites for Green Infrastructure (IF4, Appx C)
		New Footpath Links
		Thames Path National Trail
		Green Way Preferred
		Green Way Alternative
		National Cycle Network Route
		RBWM Cycle Network
		RBWM Boundary



0 1 2 km

www.rbwm.gov.uk

Royal Borough of Windsor & Maidenhead

© Crown copyright and database right 2021. Ordnance Survey 100018817